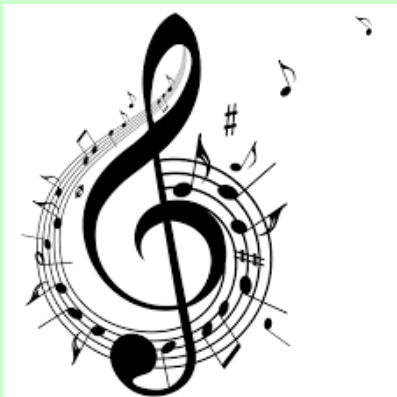


Crossley Fields and Overthorpe Brass

Hi year 4 I have a couple of things for you to do this week.

1. Warmup using our first 3 notes.
2. Use the rhythm clock to develop stronger tonguing
3. Continue reading music as carefully as you can



1. Warmup using these notes. Make sure each note is 4 counts long

A musical staff with five blue horizontal lines. Three black notes are positioned on the staff. The first note is a whole note on the first line, with the number '0' and the letter 'C' below it. The second note is a whole note on the second line, with the number '1' and the letter 'D' below it. The third note is a whole note on the third line, with the number '1' and the letter 'E' below it. Each note has a vertical stem extending upwards from the top of the note head.

3

How far round the clock can you go? Remember the way we used tea and coffee to read those rhythms.

The diagram shows a circular clock face with musical rhythms at each hour. The numbers 1 through 12 are in black boxes around the circle. Each hour has a unique rhythm of notes and stems. A speaker icon is on the right.

Hour	Rhythm Description
1	Quarter note, eighth note, eighth note, quarter note
2	Quarter note, eighth note, eighth note, quarter note, eighth note, eighth note
3	Quarter note, quarter note, quarter note, eighth note, eighth note
4	Quarter note, eighth note, eighth note, quarter note, quarter note, quarter note
5	Quarter note, eighth note, eighth note, quarter note, quarter note, quarter note
6	Quarter note, eighth note, eighth note, quarter note, quarter note, quarter note
7	Quarter note, eighth note, eighth note, quarter note, quarter note, quarter note
8	Quarter note, eighth note, eighth note, quarter note, quarter note, quarter note
9	Quarter note, quarter note, quarter note, quarter note, quarter note, quarter note
10	Quarter note, eighth note, eighth note, quarter note, eighth note, eighth note
11	Quarter note, eighth note, eighth note, quarter note, eighth note, eighth note
12	Quarter note, quarter note, quarter note, quarter note

Can you play the 2 Note piece?

2N Mstart G

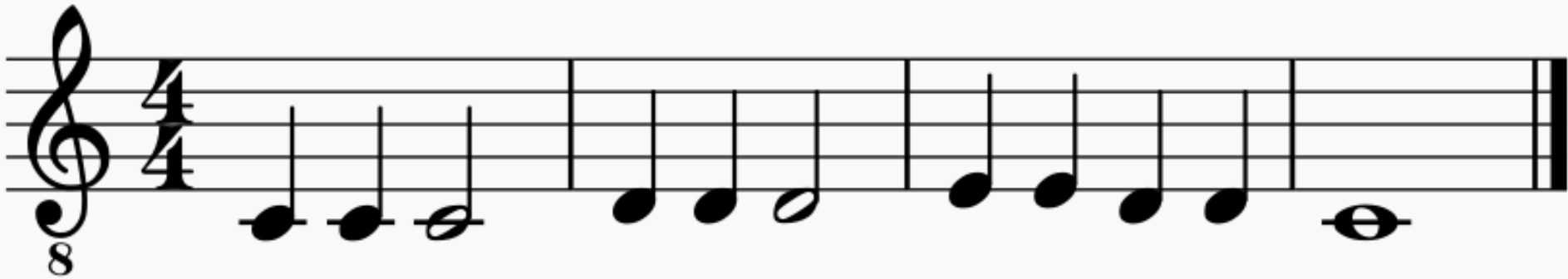
G Pulleyn

Musical notation for the first staff, 4/4 time signature, starting with a treble clef. The melody consists of quarter notes: G4, A4, B4, C5, B4, A4, G4, F4, E4, D4.

5

Musical notation for the second staff, 4/4 time signature, starting with a treble clef. The melody consists of quarter notes: G4, A4, B4, C5, B4, A4, G4, F4, E4, D4.

Now try to read all 3 notes correctly.



Watch your pitching!!

